

NEW PRODUCT

N412SSC ULTIMATE SERIES ENCLOSURES NEMA 4X SINGLE DOOR WALL-MOUNT



N41201606SSC

Industry Standards

UL 508, Types 4, 4X, 12, & 13
CSA Certified, Types 4X, 12, & 13
NEMA/EEMAC Type 4, 4X, 12, & 13
JIC EL-1-71

 UL Files E64791

 CSA File LL66078

FEATURES-SPECIFICATIONS

Applications

Hubbell Wiegmann N412SSC ULTIMATE Stainless Steel Series Enclosures are designed to house and protect electrical and electronic components from harsh, dirty environments. For use in installations where dirt, dust, oil, water, or other contaminants are present. It is typically used in the following areas where corrosion-resistant protection is needed: food processing plants, pharmaceutical manufacturing facilities, petrochemical plants, pulp and paper processing, and waste water treatment facilities. Streamlined styling, flush latching, and attractive Stainless Steel finish complement any high tech electronic equipment.

Construction

- Bodies and doors fabricated from 14 gauge 304 or 316 Stainless Steel
- Continuously Plasma welded seams
- Increased tub opening for better access
- Concealed hinges
- Doors are interchangeable and easily removable
- Grounding provisions provided
- 1/4-turn semi-flush oil tight latches are supplied to hold door securely closed
- Print pocket is provided
- Doors are sealed with poured-in-place polyurethane gasket**
- Mounting holes in rear of enclosure

- Studs for mounting **optional** back panel (the Ultimate back panels have increased in size to accommodate larger foot-print installations)

Finish

- All exterior surfaces have a smooth grained finish
- **Optional** back panels are white polyester powder over phosphatized surfaces

Accessories

- Back panels (see NEW PRODUCT reference tables)
- Window door (see NEW PRODUCT reference tables)
- Other accessories see Section J1-J18
- **Optional** N412MFKSS mounting foot kit

N412SSC ULTIMATE SERIES SINGLE DOOR WITH WINDOW STAINLESS ENCLOSURES									
CATALOG NUMBER		BODY/DOOR STEEL GAUGE	ENCLOSURE SIZE H X W X D	BACK PANEL CATALOG NUMBER*		DOOR & BOX STIFFENERS	BACK PANEL SIZE A & B	C	E
304 S.S.	316 S.S.			WHITE	316 S.S.				
N412121206SSC ◀	N412121206SSAC ◀	14/14	12.00x12.00x6.00 (305x305x152)	NP1212C	—	No	10.2x10.2 (259x259)	6.00 (152)	—
N412161206SSC ◀	N412161206SSAC ◀	14/14	16.00x12.00x6.00 (406x305x152)	NP1612C	NP1612SSAC	No	14.2x10.2 (361x259)	8.00 (203)	—
N412161606SSC ◀	N412161606SSAC ◀	14/14	16.00x16.00x6.00 (406x406x152)	NP1616C	NP1616SSAC	No	14.2x14.2 (361x361)	8.00 (203)	—
N412201606SSC ◀	N412201606SSAC ◀	14/14	20.00x16.00x6.00 (508x406x152)	NP2016C	NP2016SSAC	No	18.2x14.2 (462x361)	10.00 (254)	—
N412202006SSC ◀	N412202006SSAC ◀	14/14	20.00x20.00x6.00 (508x508x152)	NP2020C	NP2020SSAC	No	18.2x18.2 (462x462)	10.00 (254)	—
N412161208SSC ◀	N412161208SSAC ◀	14/14	16.00x12.00x8.00 (406x305x203)	NP1612C	NP1612SSAC	No	14.2x10.2 (361x259)	8.00 (203)	—
N412161608SSC ◀	N412161608SSAC ◀	14/14	16.00x16.00x8.00 (406x406x203)	NP1616C	NP1616SSAC	No	14.2x14.2 (361x361)	8.00 (203)	—
N412162008SSC ◀	N412162008SSAC ◀	14/14	16.00x20.00x8.00 (406x508x203)	NP2016C	NP2016SSAC	No	14.2x18.2 (361x462)	8.00 (203)	—
N412201608SSC ◀	N412201608SSAC ◀	14/14	20.00x16.00x8.00 (508x406x203)	NP2016C	NP2016SSAC	No	18.2x14.2 (462x361)	10.00 (254)	—
N412202008SSC ◀	N412202008SSAC ◀	14/14	20.00x20.00x8.00 (508x508x203)	NP2020C	NP2020SSAC	No	18.2x18.2 (462x462)	10.00 (254)	—
N412241608SSC ◀	N412241608SSAC ◀	14/14	24.00x16.00x8.00 (610x406x203)	NP2416C	NP2416SSAC	No	22.2x14.2 (564x361)	10.00 (254)	—

Continued on next page



WIEGMANN

**N412SSC ULTIMATE SERIES ENCLOSURES
NEMA 4X SINGLE DOOR WALL-MOUNT**

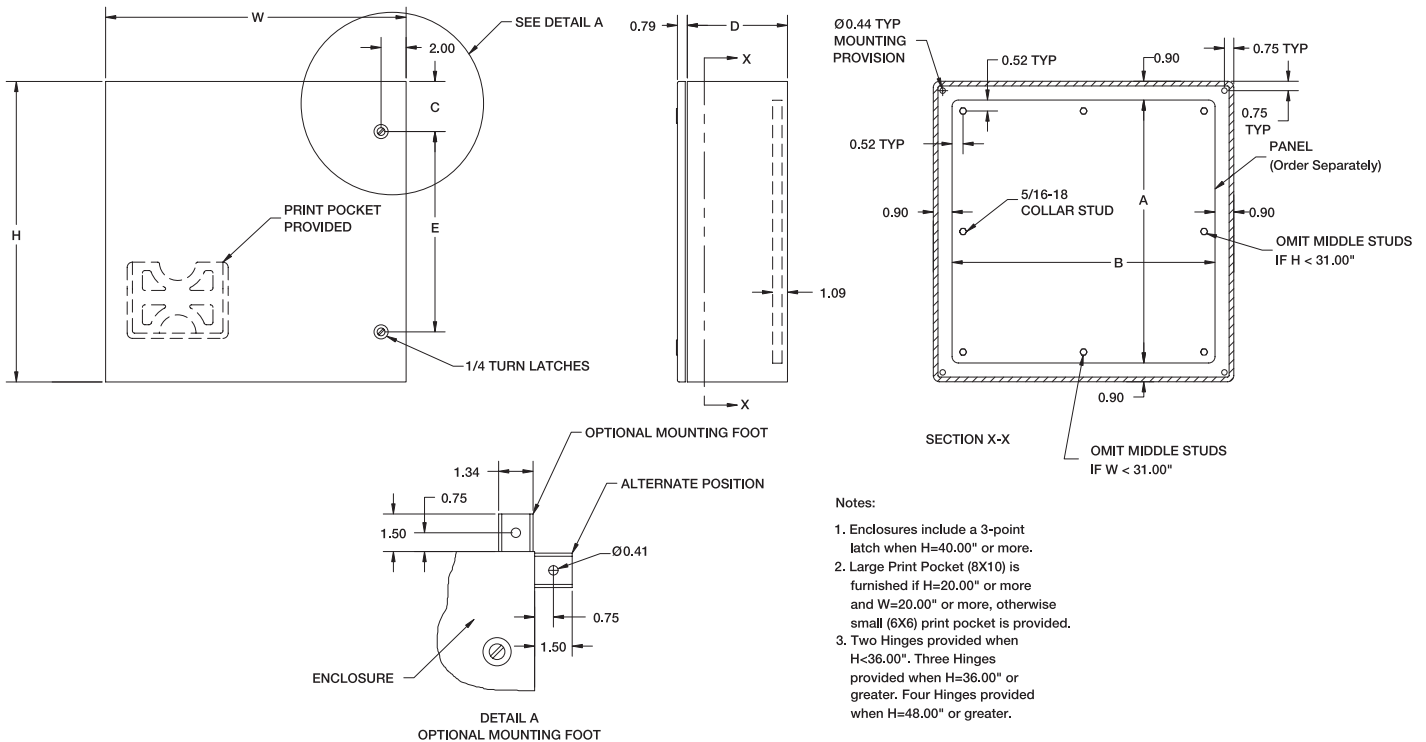
NEW PRODUCT

N412SSC ULTIMATE SERIES SINGLE DOOR STAINLESS ENCLOSURES (CONT.)									
CATALOG NUMBER		BODY/DOOR STEEL GAUGE	ENCLOSURE SIZE H X W X D	BACK PANEL CATALOG NUMBER*		DOOR & BOX STIFFENERS	BACK PANEL SIZE A & B	C	E
304 S.S.	316 S.S.			WHITE	316 S.S.				
N412242008SSC ◀	N412242008SSAC ◀	14/14	24.00x20.00x8.00 (610x508x203)	NP2420C	NP2420SSAC	No	22.2x18.2 (564x462)	12.00 (305)	—
N412242408SSC ◀	N412242408SSAC ◀	14/14	24.00x24.00x8.00 (610x610x203)	NP2424C	NP2424SSAC	No	22.2x22.2 (564x564)	4.00 (102)	16.00 (406)
N412302408SSC ◀	N412302408SSAC ◀	14/14	30.00x24.00x8.00 (762x610x203)	NP3024C	NP3024SSAC	No	28.2x22.2 (716x564)	4.00 (102)	22.00 (559)
N412303008SSC ◀	N412303008SSAC ◀	14/14	30.00x30.00x8.00 (762x610x203)	NP3030C	NP3030SSAC	No	28.2x28.2 (716x716)	4.00 (102)	22.00 (559)
N412362408SSC ◀	N412362408SSAC ◀	14/14	36.00x24.00x8.00 (914x610x203)	NP3624C	NP3624SSAC	No	34.2x22.2 (869x564)	4.00 (102)	28.00 (711)
N412363008SSC ◀	N412363008SSAC ◀	14/14	36.00x30.00x8.00 (914x762x203)	NP3630C	NP3630SSAC	No	34.2x28.2 (869x716)	4.00 (102)	28.00 (711)
N412202012SSC ◀	N412202012SSAC ◀	14/14	20.00x20.00x12.00 (508x508x305)	NP2020C	NP2020SSAC	No	18.2x18.2 (462x462)	10.00 (254)	—
N412242412SSC ◀	N412242412SSAC ◀	14/14	24.00x24.00x12.00 (610x610x305)	NP2424C	NP2424SSAC	No	22.2x22.2 (564x564)	4.00 (102)	16.00 (406)
N412302412SSC ◀	N412302412SSAC ◀	14/14	30.00x24.00x12.00 (762x610x305)	NP3024C	NP3024SSAC	No	28.2x22.2 (716x564)	4.00 (102)	22.00 (559)
N412362412SSC ◀	N412362412SSAC ◀	14/14	36.00x24.00x12.00 (914x610x305)	NP3624C	NP3624SSAC	No	34.2x22.2 (869x564)	4.00 (102)	28.00 (711)
N412363012SSC ◀	N412363012SSAC ◀	14/14	36.00x30.00x12.00 (914x762x305)	NP3630C	NP3630SSAC	No	34.2x28.2 (869x716)	4.00 (102)	28.00 (711)
N412363612SSC ◀	N412363612SSAC ◀	14/14	36.00x36.00x12.00 (914x914x305)	NP3636C	NP3636SSAC	No	34.2x34.2 (869x869)	4.00 (102)	28.00 (711)
N412423612SSC ◀	N412423612SSAC ◀	14/14	42.00x36.00x12.00 (1067x914x305)	NP4236C	NP4236SSAC	No	40.2x34.2 (1021x869)	21.00 (533)	—
N412483612SSC ◀	N412483612SSAC ◀	14/14	48.00x36.00x12.00 (1219x914x305)	NP4836C	NP4836SSAC	No	46.2x34.2 (1173x869)	24.00 (610)	—
N412603612SSC** ◀	N412603612SSAC** ◀	14/14	60.00x36.00x12.00 (1524x914x305)	NP6036C	NP6036SSAC	No	58.2x34.2 (1478x869)	30.00 (762)	—

◀ NEW PRODUCT IN 2004

*Back panels must be ordered separately.

**Enclosures are supplied with closed cell neoprene gasket (not foam-in-place).



**NP SERIES BACK PANELS
ACCESSORY PANELS FOR NEMA 1, 3R, 12, 4 & 4X WALL-MOUNTS**

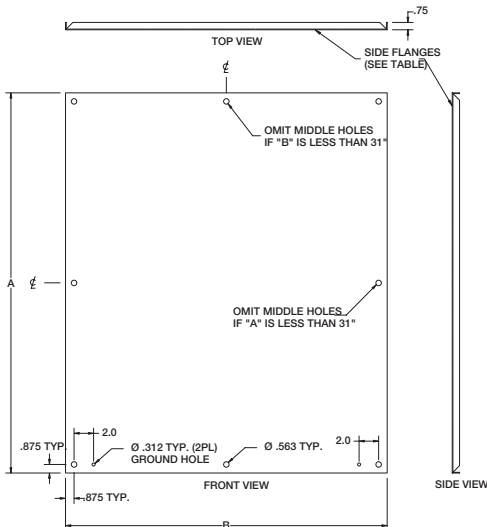


NP1212

FEATURES-SPECIFICATIONS

Description

- Steel and stainless panels are 12 gauge
- Aluminum panels are 5052-H32 aluminum alloy, .080-inch thick
- Panel with any side over 17.00" has 3/4" flange on all sides
- Steel panels are painted white polyester powder
- Panels fit the following enclosures:
 - NEMA 1, Large (NIC)
 - NEMA 3R, Hinge Cover (RHC, Large)
 - NEMA 4, 412, & 4X Single Door (N12, N4, N412, SSN4)
 - NEMA 12 2-Door Wall-Mount, (WAWF), Single Door Right Flange Disconnect (SDN12, ABN12) Large JIC (B-CH, Large) Single door N12



BACK PANELS FOR NEMA 1, 3R, 12, 4 & 4X WALL-MOUNT ENCLOSURES			
PAINTED STEEL (WHITE)	CATALOG NUMBER		PANEL SIZE A X B
	316 STAINLESS STEEL	ALUMINUM	
NP1212	—	—	9.00X9.00 (229X229)
NP1224	—	—	9.00X21.00 (229X533)
NP1612	NP1612SSA	ALNP1612	13.00X9.00 (330X229)
NP1616	NP1616SSA	ALNP1616	13.00X13.00 (330X330)
NP1620	—	—	17.00X13.00 (432X330)
NP2012	—	—	17.00X9.00 (432X229)
NP2016	NP2016SSA	ALNP2016	17.00X13.00 (432X330)
NP2024	—	—	21.00X17.00 (533X432)
NP2020	NP2020SSA	ALNP2020	17.00X17.00 (432X432)
NP2412	—	—	21.00X9.00 (533X229)
NP2416	NP2416SSA	—	21.00X13.00 (533X330)
NP2420	NP2420SSA	ALNP2420	21.00X17.00 (533X432)
NP2424	NP2424SSA	ALNP2424	21.00X21.00 (533X533)
NP2430	—	—	27.00X21.00 (686X533)
NP3016	—	—	27.00X13.00 (686X330)
NP3020	NP3020SSA	—	27.00X17.00 (686X432)
NP3024	NP3024SSA	ALNP3024	27.00X21.00 (686X533)
NP3030	NP3030SSA	—	27.00X27.00 (686X686)
NP3036	—	—	33.00X27.00 (838X686)
NP3042	—	—	39.00X27.00 (991X686)
NP3624	NP3624SSA	ALNP3624	33.00X21.00 (838X533)
NP3630	NP3630SSA	ALNP3630	33.00X27.00 (838X686)
NP3636	NP3636SSA	—	33.00X33.00 (838X838)
NP3642	—	—	39.00X33.00 (991X838)
NP4024	—	—	37.00X21.00 (940X533)
NP4224	—	—	39.00X21.00 (991X533)
NP4230	NP4230SSA	—	39.00X27.00 (991X686)
NP4236	NP4236SSA	—	39.00X33.00 (991X838)
NP4824	—	—	45.00X21.00 (1143X533)
NP4830	—	—	45.00X27.00 (1143X686)
NP4836	NP4836SSA	ALNP4836	45.00X33.00 (1143X838)
NP6030	—	—	57.00X27.00 (1448X686)
NP6036	NP6036SSA	ALNP6036	57.00X33.00 (1448X838)
NP7230	—	—	69.00X27.00 (1753X686)
NP7236	—	—	69.00X33.00 (1753X838)